



George Thomas Rope 23



George Frost 43



Harry Becker 6

COLLECTOR'S CHOICE

WORKS BY GEORGE THOMAS ROPE, HARRY BECKER AND GEORGE FROST

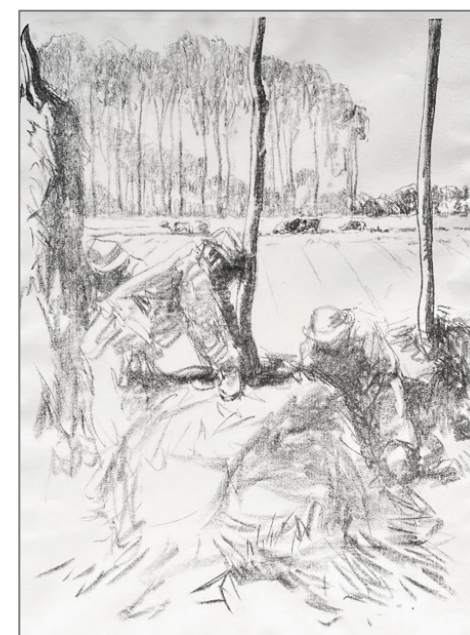
Together with a selection of affordable Suffolk School Paintings



George Thomas Rope 25



John Moore 45



Harry Becker 11

HARRY BECKER



1. Horse and Tumbril Pencil 14x20½ £1,450



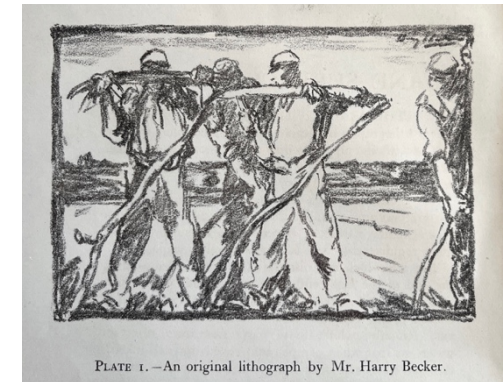
2. Three Cows Etching 4½x9¾ £695 set of three framed with the two rare surviving artist's progress proofs



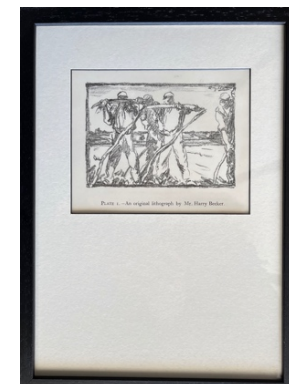
3. Two Horses Ploughing Etching 6x14 £1,550 for set of 5
With a very rare and important set of four hand worked progress proofs, , showing the development to the final printed state, with Harry Becker's additions
Framed as three initial layouts and two final compositions



4. Shoeing a Horse Etching 15¾x23¾ £950
A fine impression of a large-scale Becker etching



5. Sharpening Scythes Lithograph 4½x5¾ £195
A good impression of a popular subject, issued bound, now framed and preserving the entire page



HARRY BECKER



6. Landscape with Pool Oil on board 4x7 £875



7. Mother and Child Watercolour 6½x6½ £580



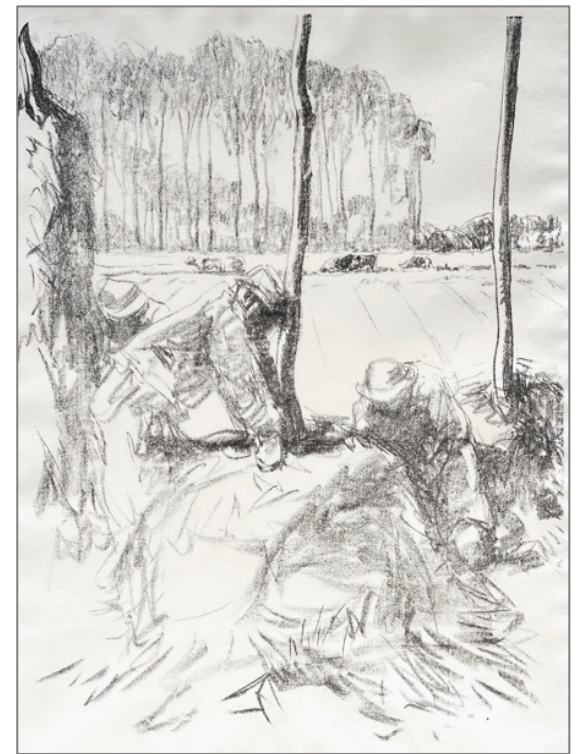
8. Potato Gathering Ex Loftus Pencil 3x6 £285



9. Farmhand at Work Lithograph 14¼x20¾ £675
Signed in pencil by the artist



10. Cow in a Stable Lithograph 15x21 £295



11. Building a Bean Pole Lithograph 24x17½ £420



12. Horses and Cart Pencil 11½ x10 £865



13. Farnham Street by Night Sepia 9x13 £365



14. Wethersfield, Essex Pencil $8\frac{3}{4} \times 6\frac{1}{4}$ £425

GEORGE THOMAS ROPE



15. Snape Junction Sepia wash 7x5 £325



16. Keeper's Hut, Iken Heath Pencil & wash $3\frac{1}{2} \times 5$ £280



17. A Normandy Barn Pencil 4x6 £130



18. Cottage by Moonlight Oil on panel 7x11 £425



19. Landscape Pencil Sepia 7x $6\frac{1}{2}$ £220



20. Tuppenny Arch, nr. Minsmere Pencil $5\frac{1}{2} \times 9\frac{1}{2}$ £240

GEORGE THOMAS ROPE



21. Acorn Cottage, Blaxhall Oil 22x17 £595



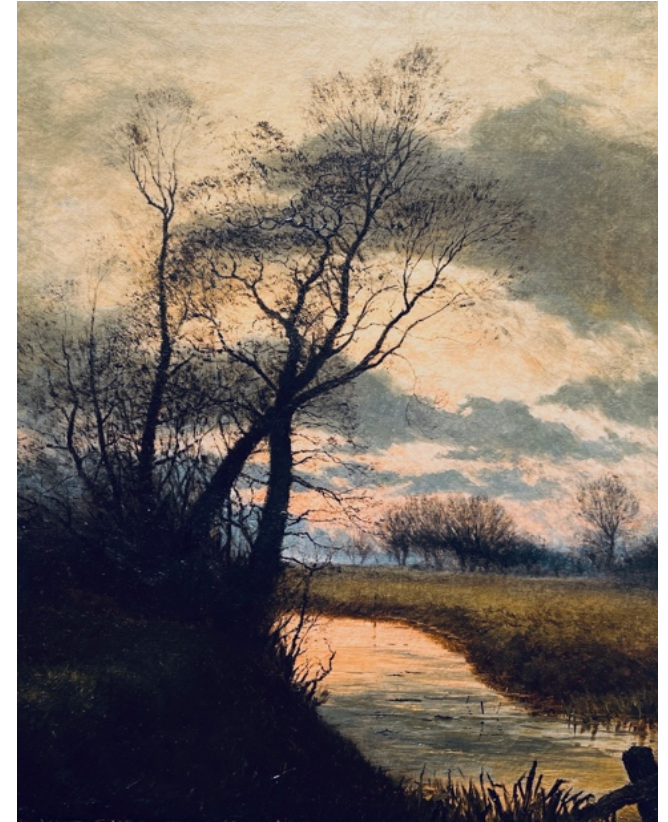
22. Roadway, Blaxhall? Oil on canvas 1889 14x20 £580



23. A Frisky Grey Oil on board 8x12 £575



24. Studies of Grey Horses Oil on panel 8x12½ £480 pair

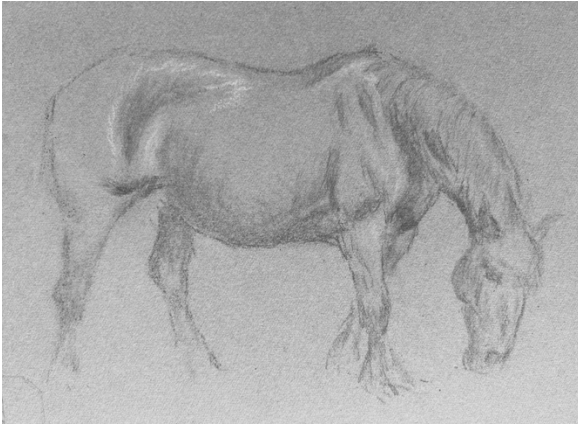


25. Evening River Scene Oil on canvas 18x14 Signed £495



26. View near Snape Oil on canvas 17x21 £595

GEORGE THOMAS ROPE



27. Horses Grazing Pencil blue paper 5¼x6¾ £360 pair



28. Horse Grazing Pencil 5½x7 £235



29. Sketch of a Mare Oil on panel 10x14 £395



30. Suffolk Punch Mare & Chickens Verso
Oil, both sides on joined panel 13x16 £440



31. Near Beversham Bridge Pencil 5½x5 Signed £280



32. Near Hatfield Peverell Pencil 6½x9 Signed £285

GEORGE THOMAS ROPE



33. Cat Waiting Pencil. 5½x5 £260



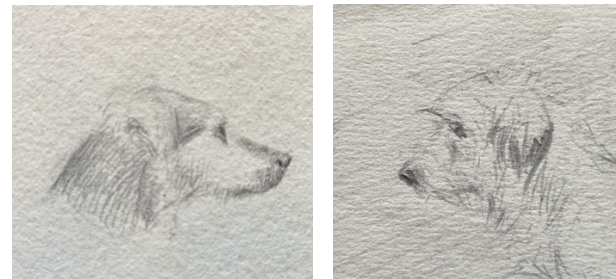
34. A Broody Chicken Pencil 7x9 £140
Verso **Standing Horse** from a sketchbook, probably used as a study for an oil painting



35. Sheep in a Meadow Pencil 6½x6½ Signed GR £175



36. Landscape with Cottage Pencil 2½x6½ £80



37. Heads of Dogs Pencil framed as one 2x2½ £280



38. Lane with Trees Pencil 8x7 £260



39. Dog in Profile Standing Pencil 5½x6 £235

GEORGE FROST



40. Cow Pencil 5x5¼ £95



41. Horse Pencil 6¼x6 £80



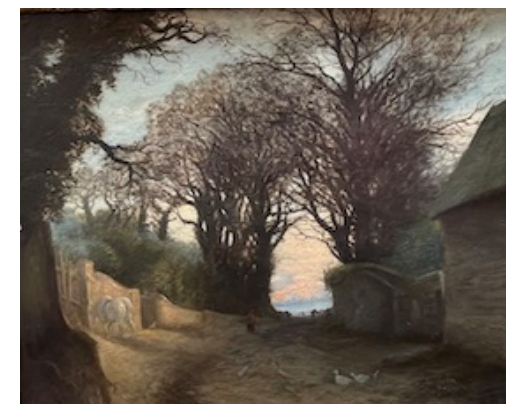
42. Tree Pencil 6½x5¼ £140



43. Cow Wash 4x2½ £170



44. Two Women in Hats Pencil 3x3½ £85

45. John Moore **Moonlight Fishing** Oil on panel 6x8 £79546. G. Woodruffe **Wilford from Melton** Oil 8¾x10½ £18047. John Moore **Sunset on the Deben** Oil panel 6x8 £89548. Edward R Smythe **Encampment** Pastel 6½x10 £38049. George Thomas Rope **Roadway** Oil 12x15 £40050. Charlie Churchyard **Wilford Bridge** 6x8¾ £150
john@eatac.co.uk 07960 274139